

SKIN HEM A

1" →

UPPER BRIDLE CONNECTION TIE TO SPINE

SPINE TOP IS ON SPARS SPINE IS 3/8" DIA. CARBON

LEADING EDGE SPAR - 0.05 CARBON 1 3/4" (includes extension)

SWEET SPOT FOR TOW POINT

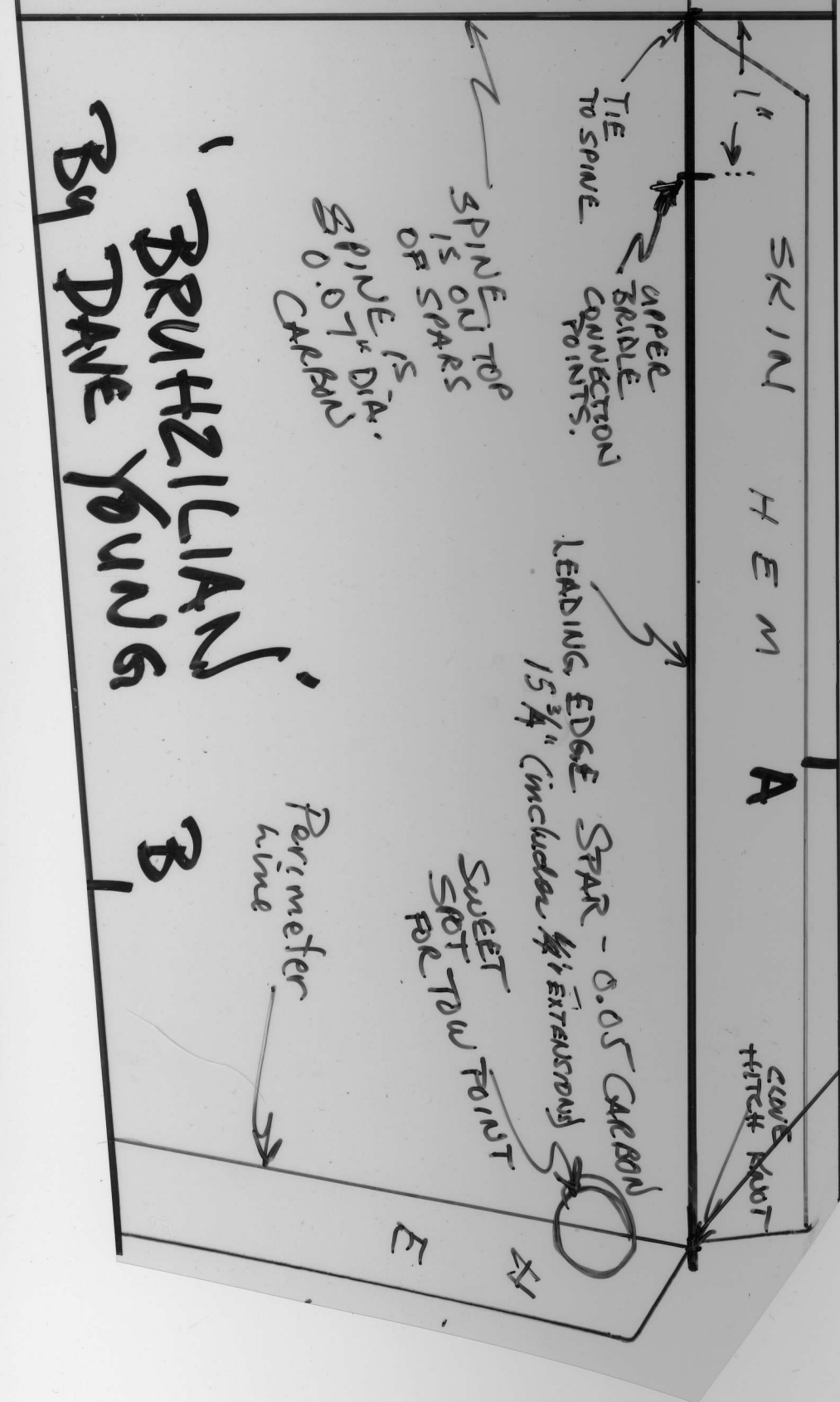
CLIVE KNOT

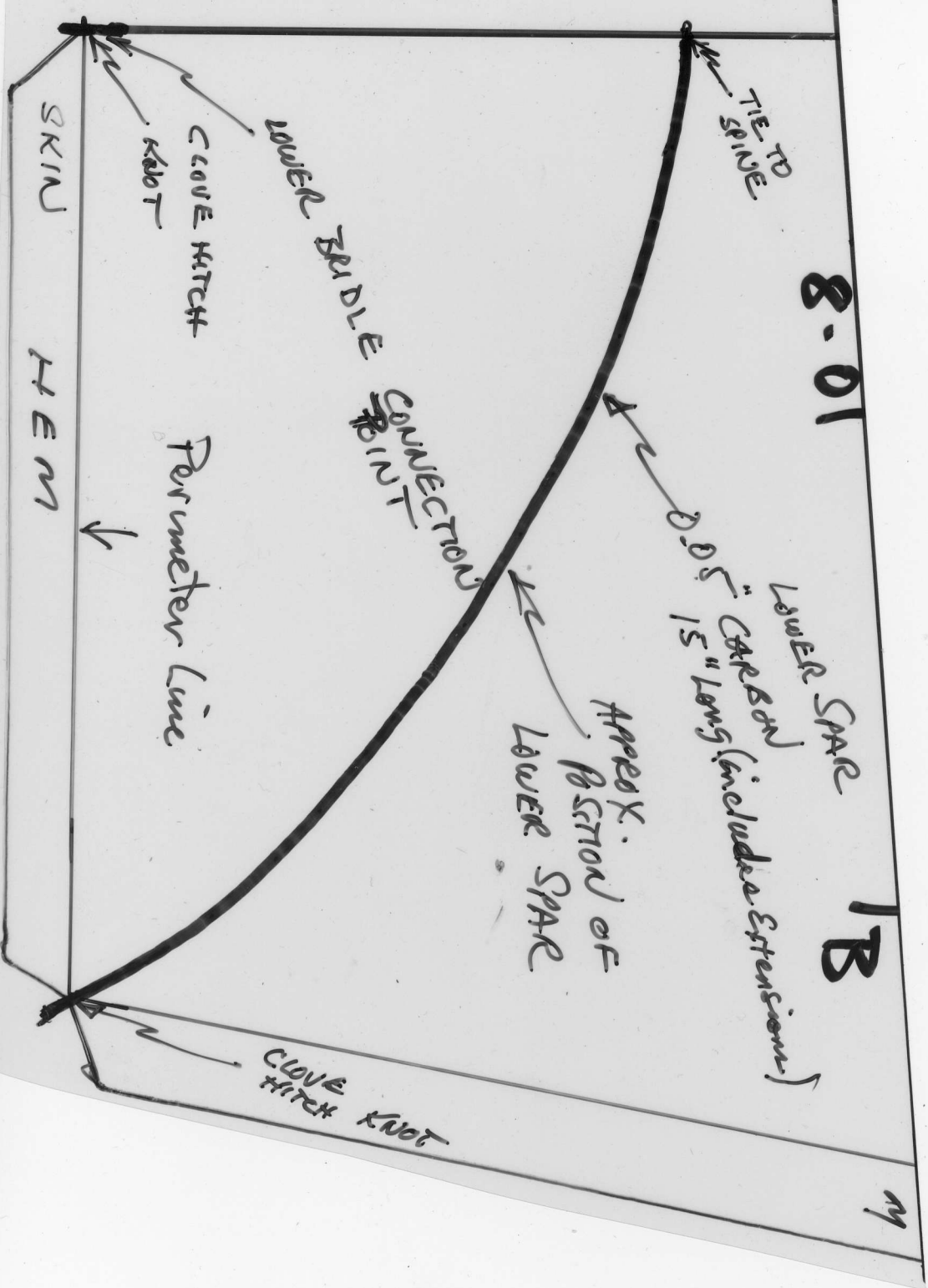
Perimeter line

BRUNZILIAN
By Dave Young

B

H
E





m